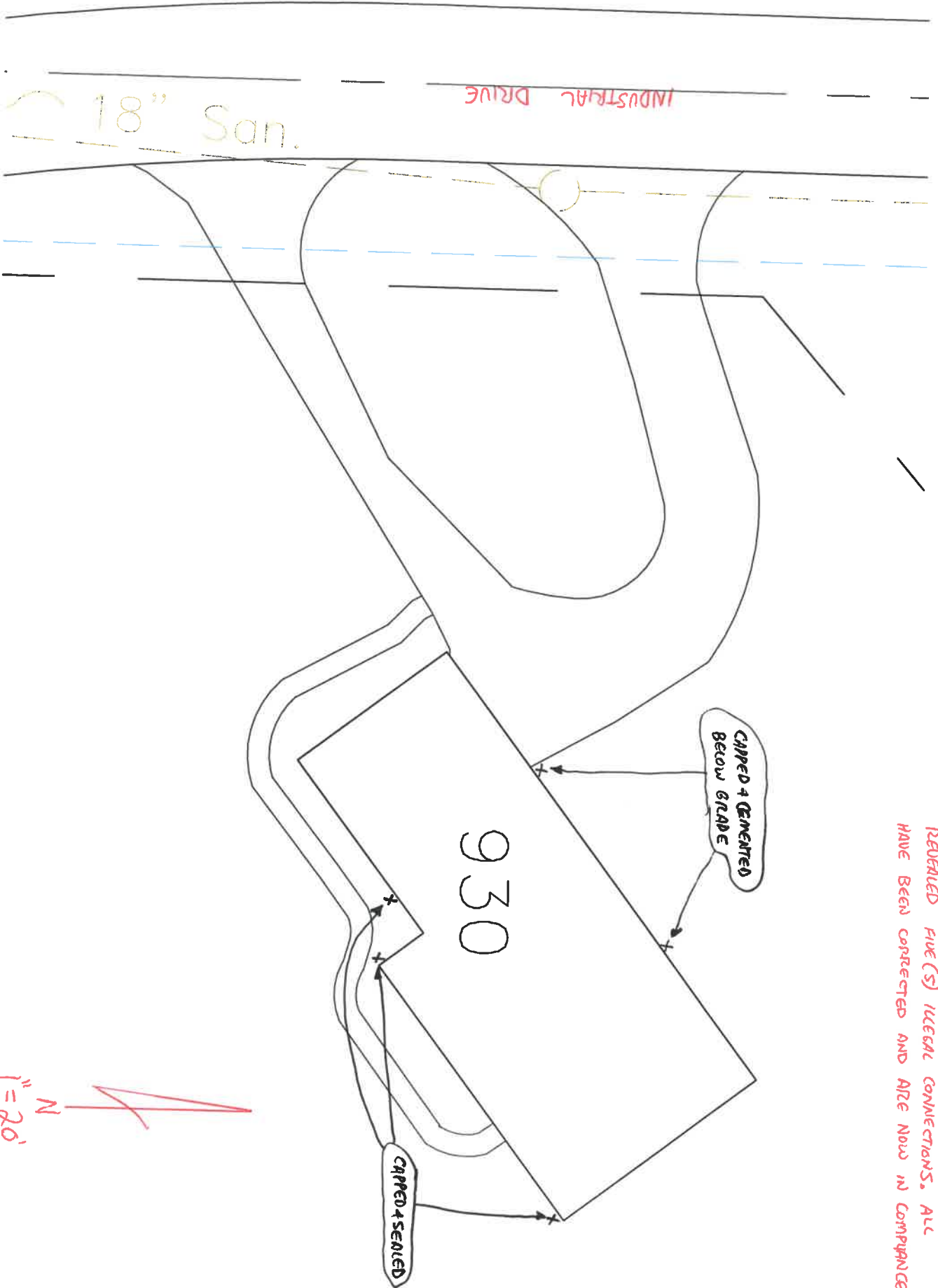


930 EAST RIVERVIEW AVENUE

DATE: 5-1-15

INVESTIGATION OF ILLEGAL SEWER CONNECTIONS
REVEALED FIVE (5) ILLEGAL CONNECTIONS. ALL
HAVE BEEN CORRECTED AND ARE NOW IN COMPLIANCE.



1" = 20'
N